





ALLISON

1915

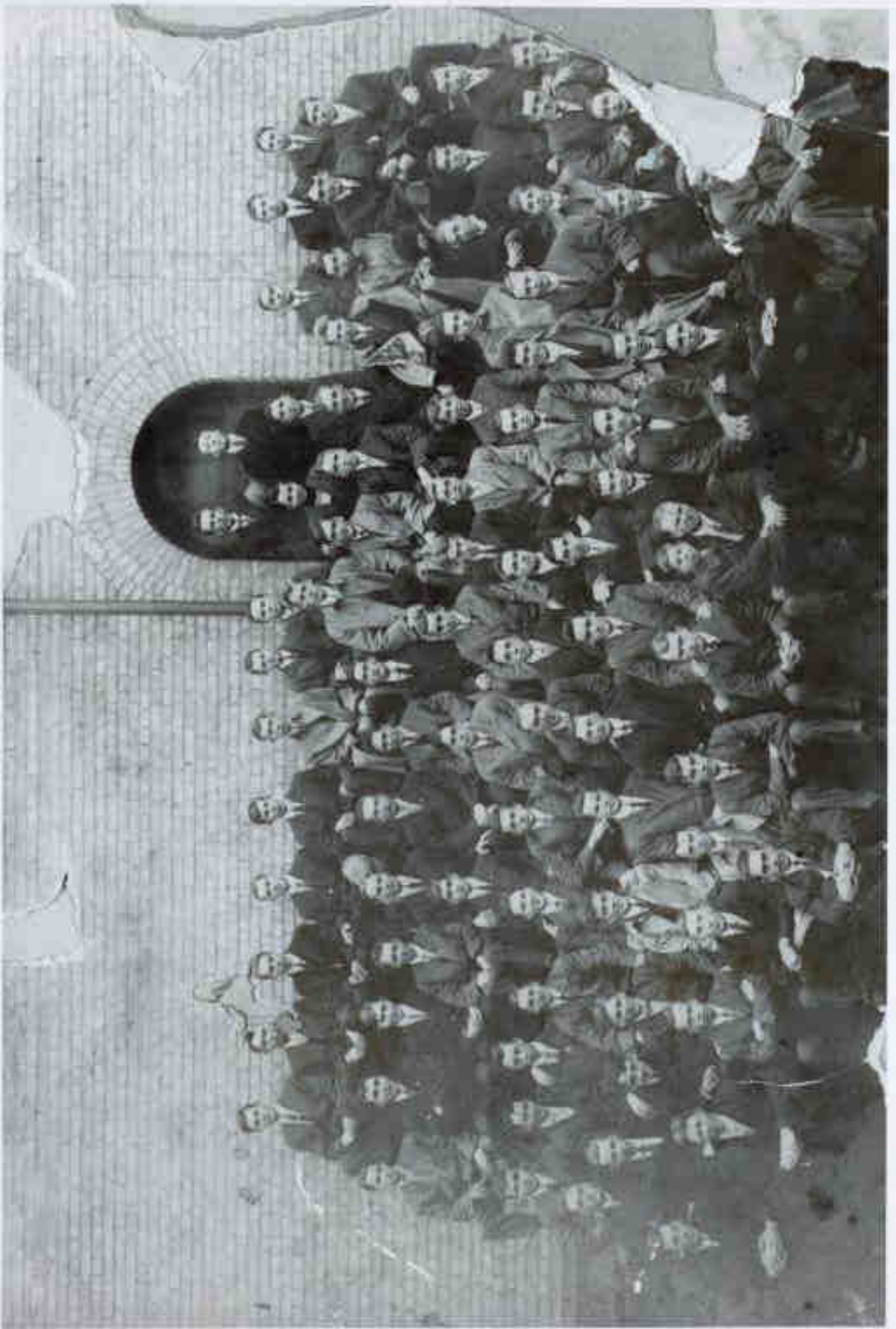






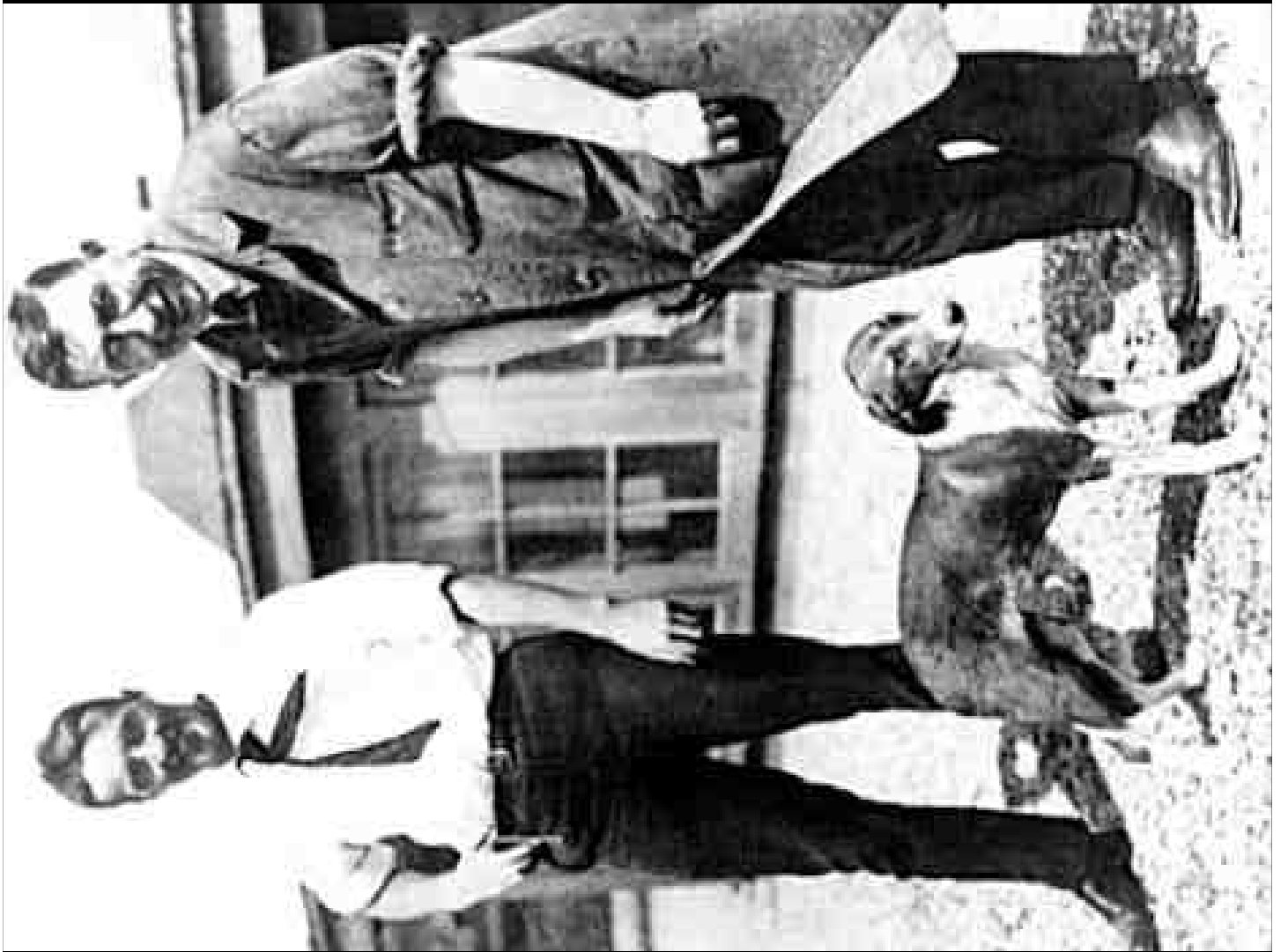
Margaret Madson 1921



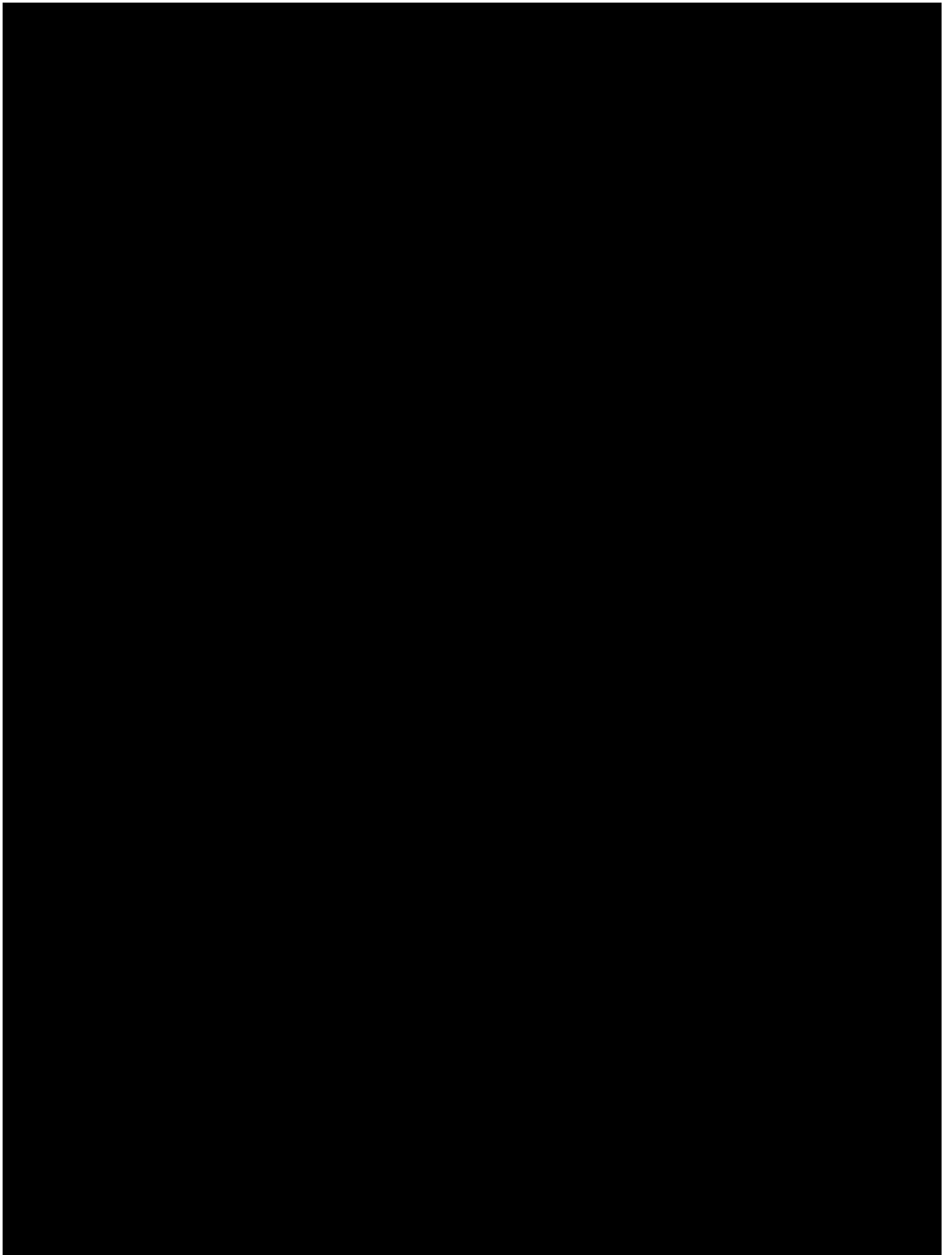








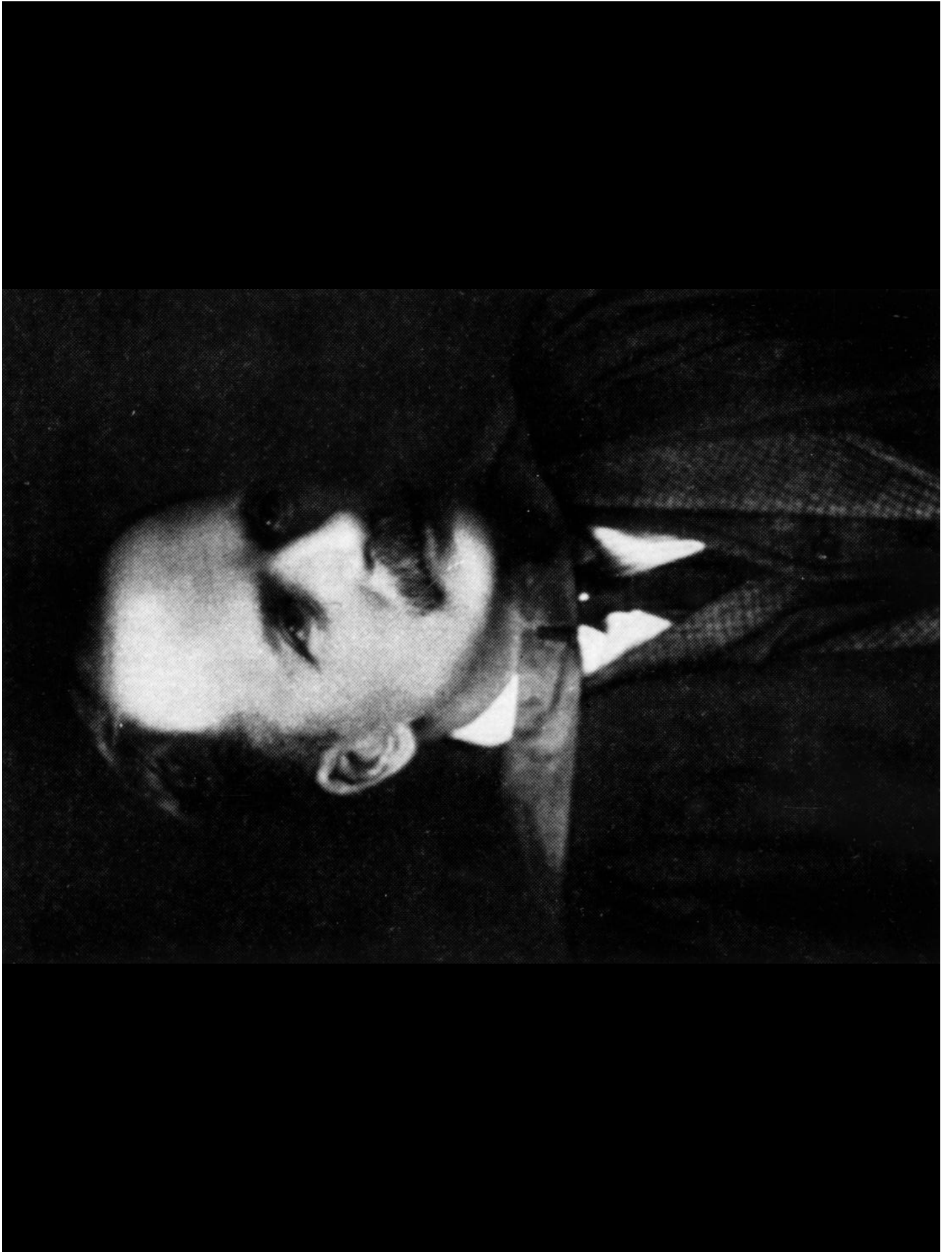




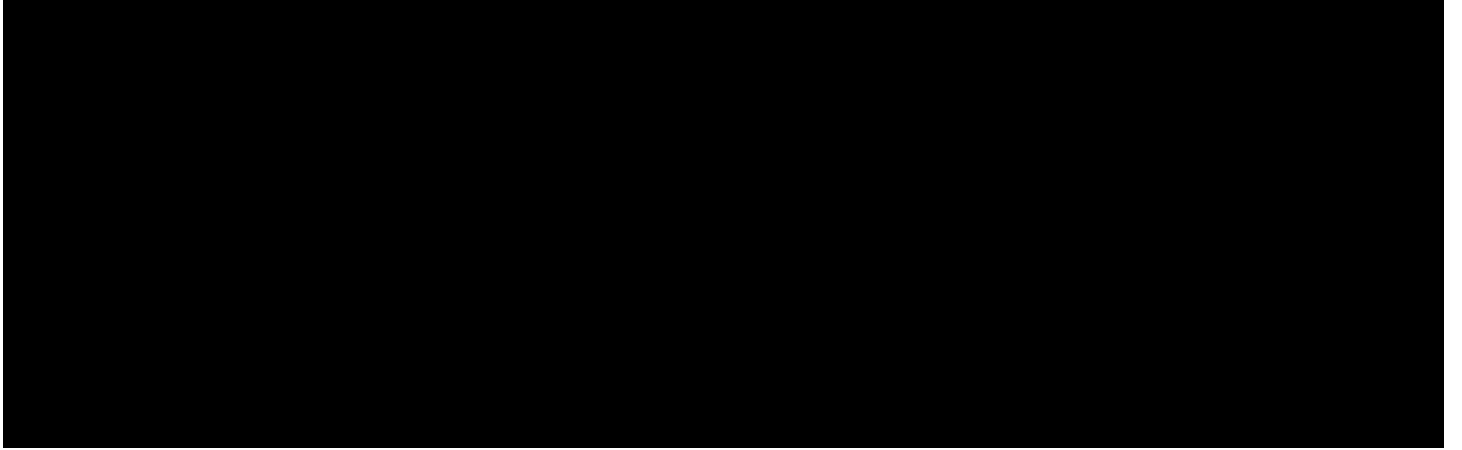






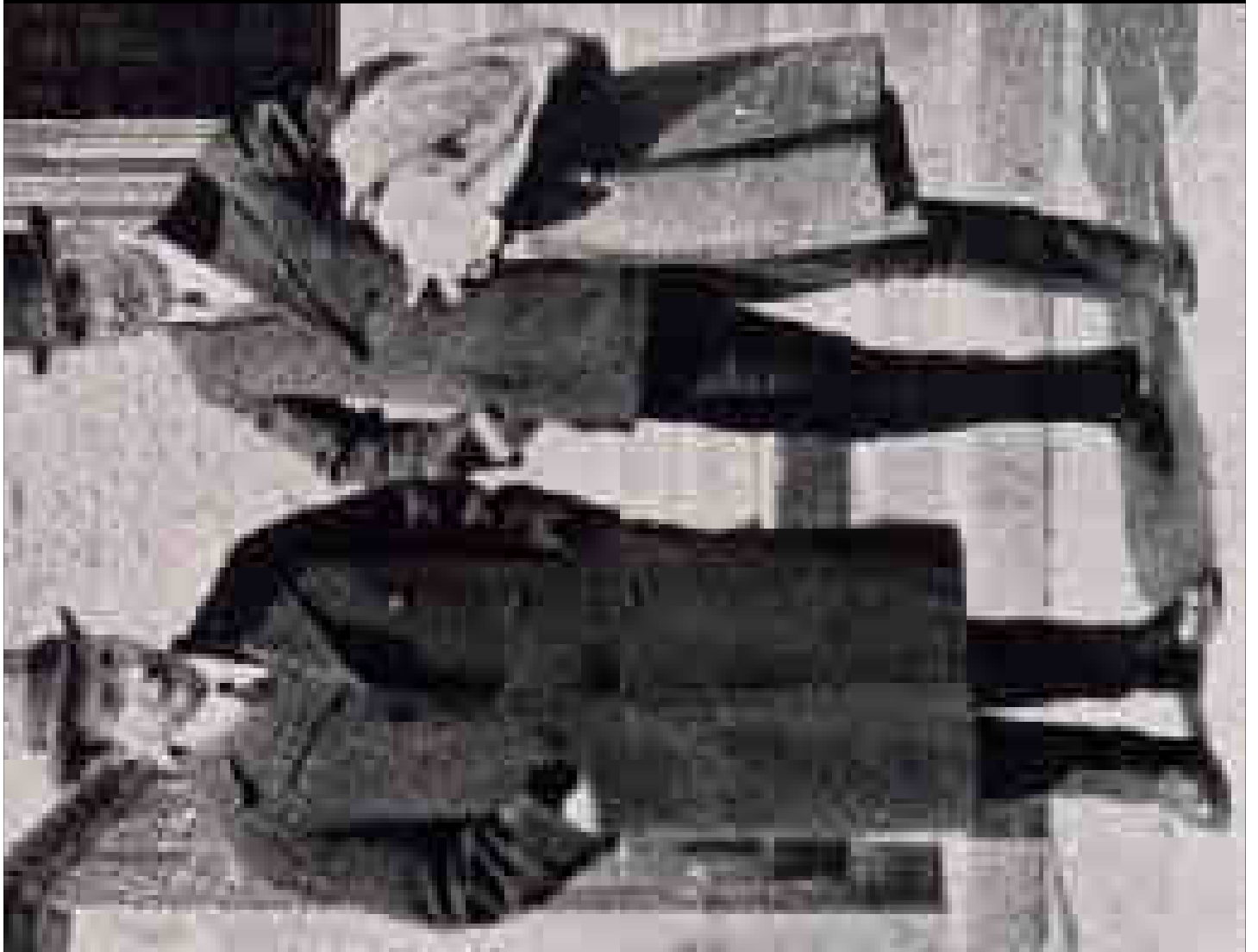












IF IT BEARS A  
RED LILLY  
IT'S RIGHT



PROF. AUG. KRUGH

5407-4



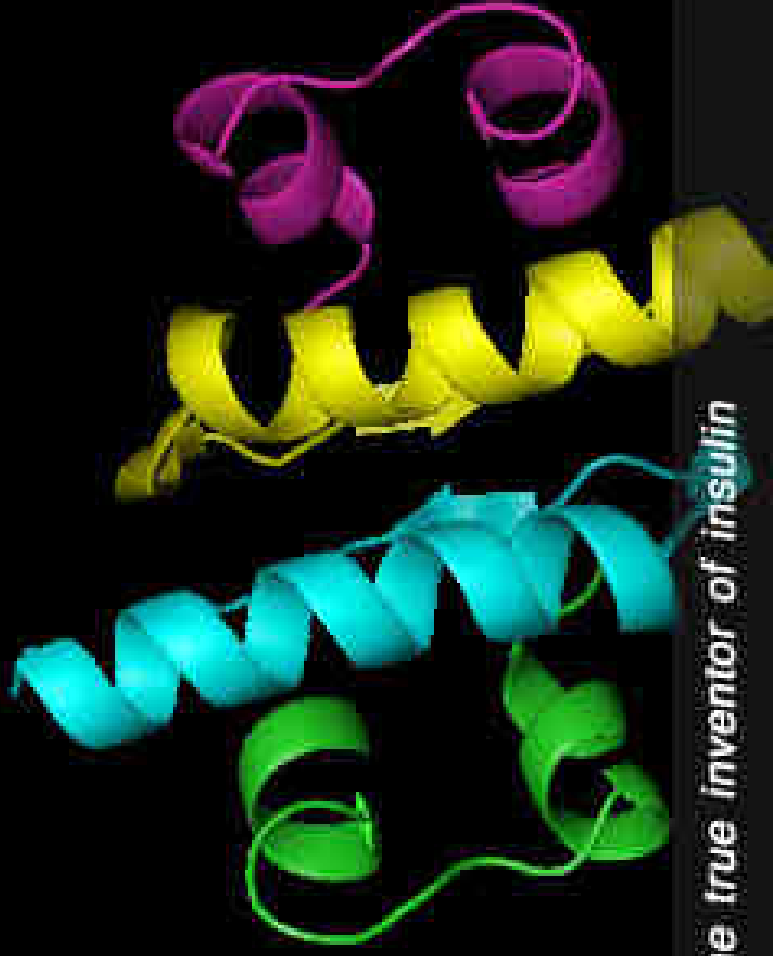








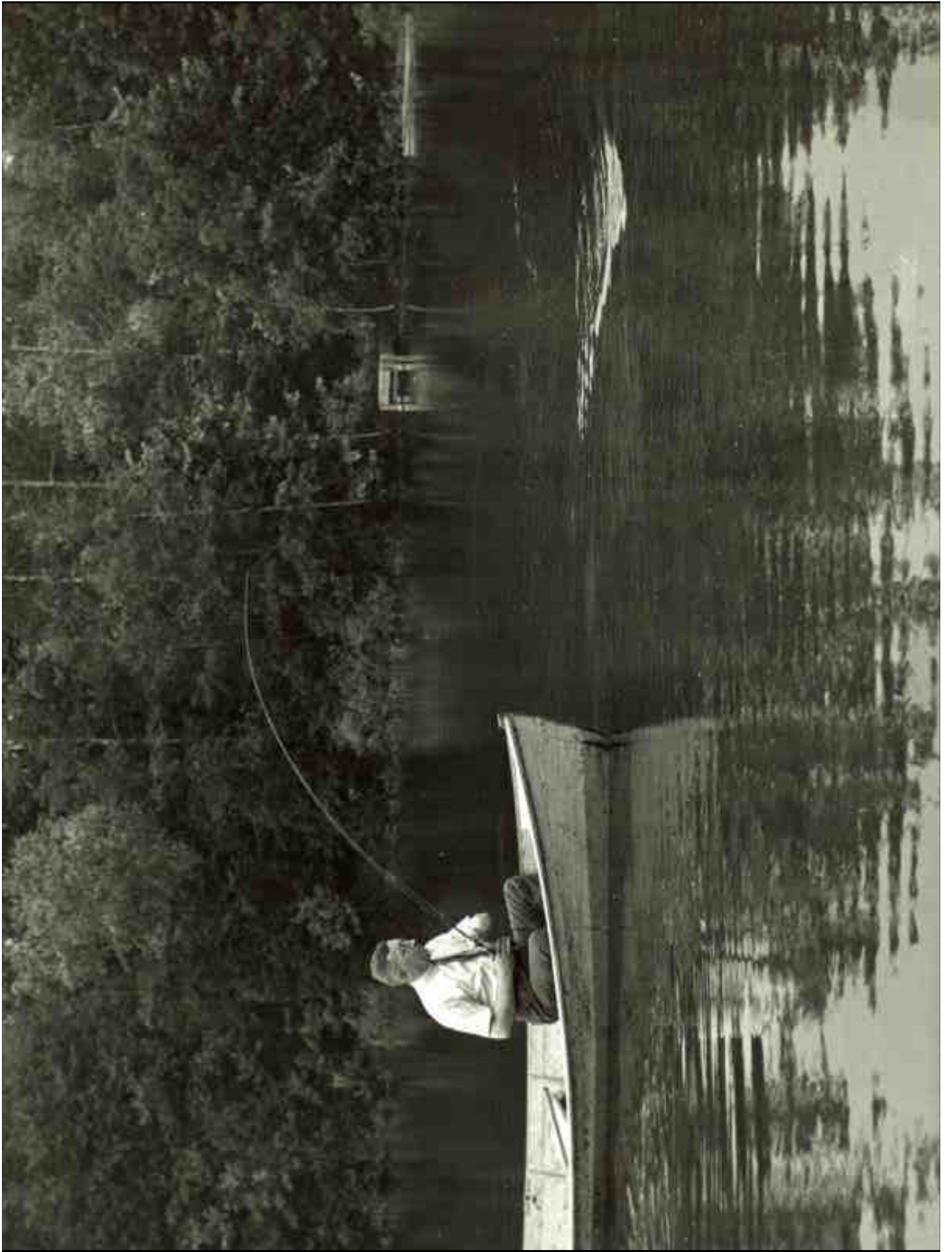




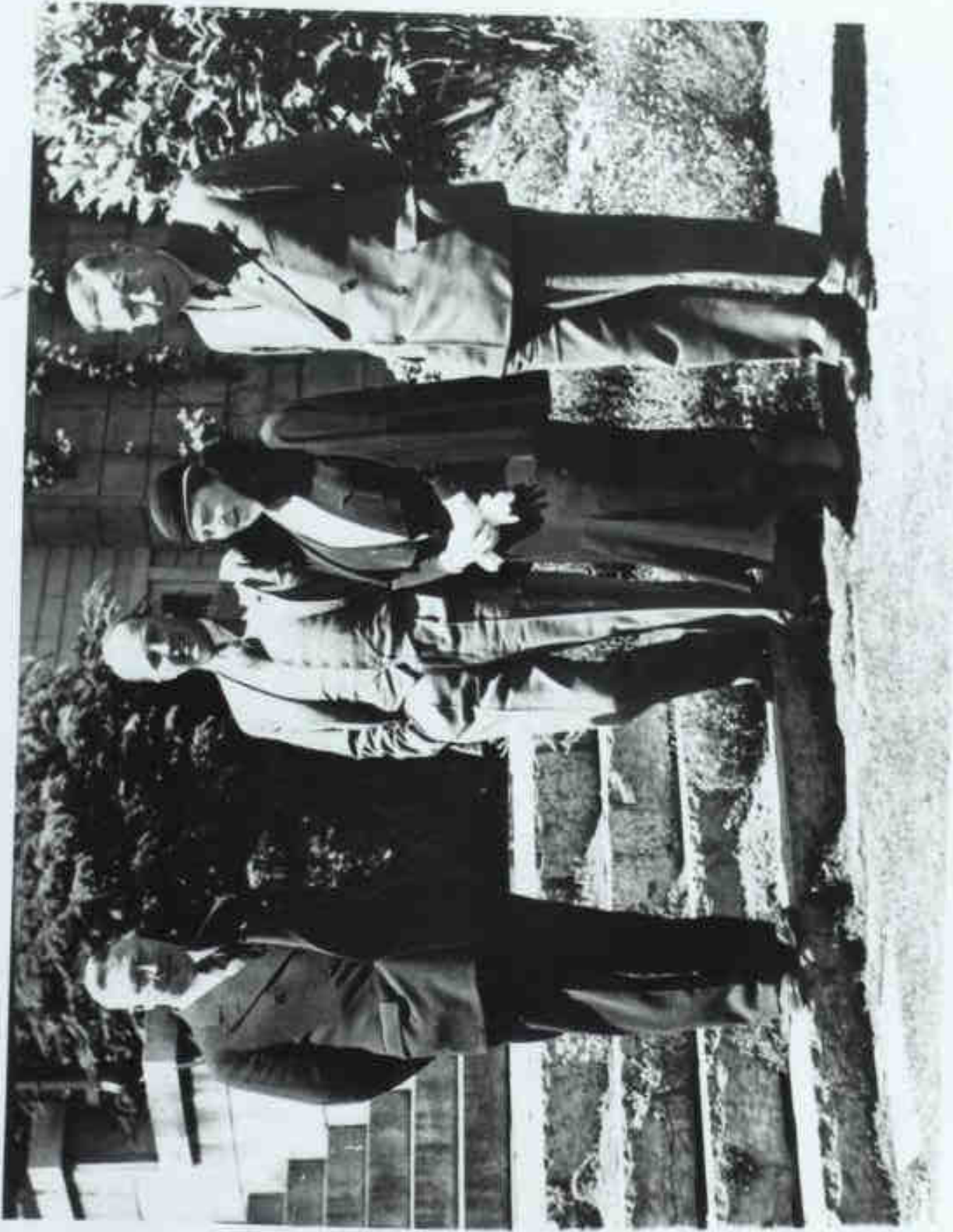
*Nicolae Paulescu - the true inventor of insulin*



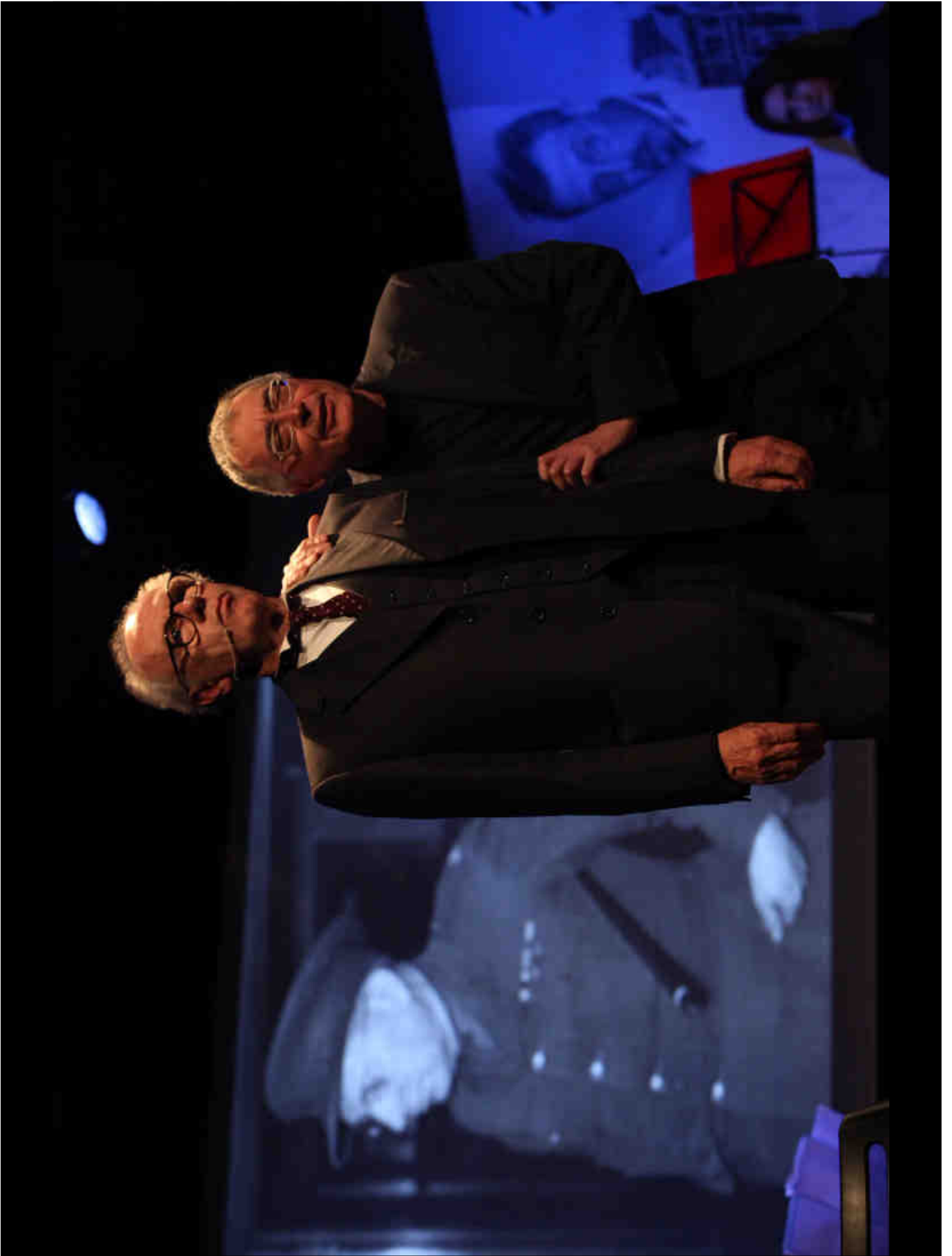




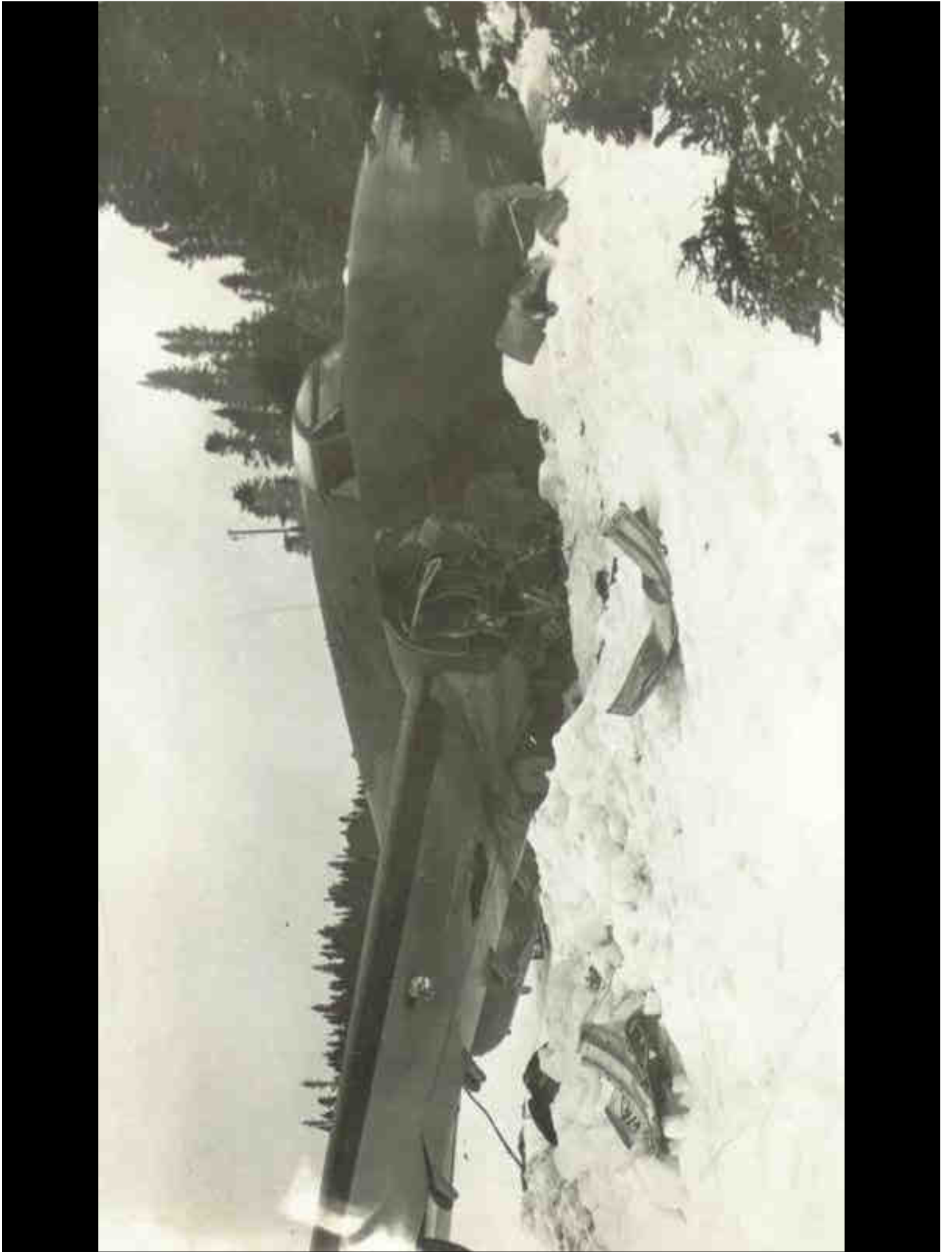


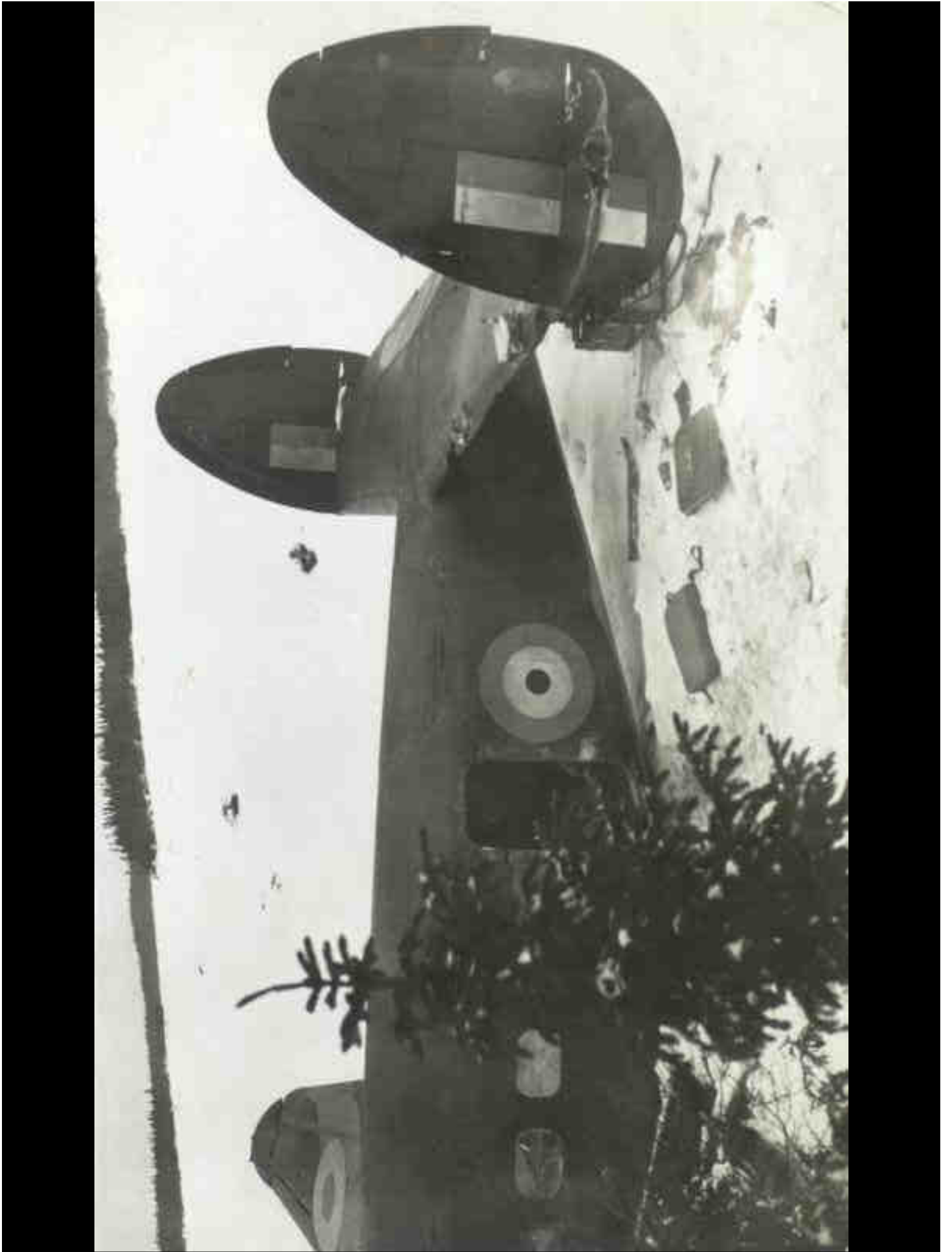


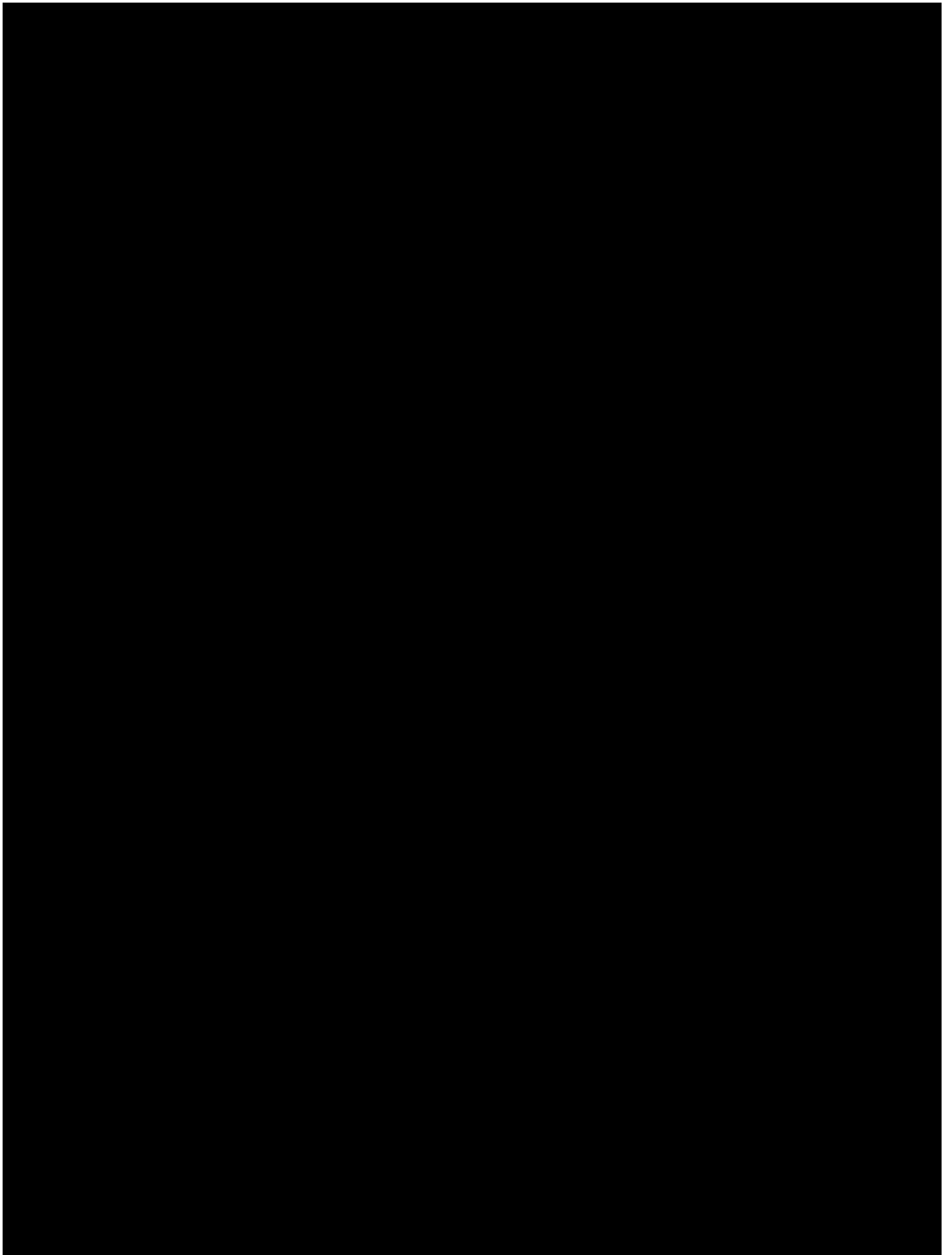










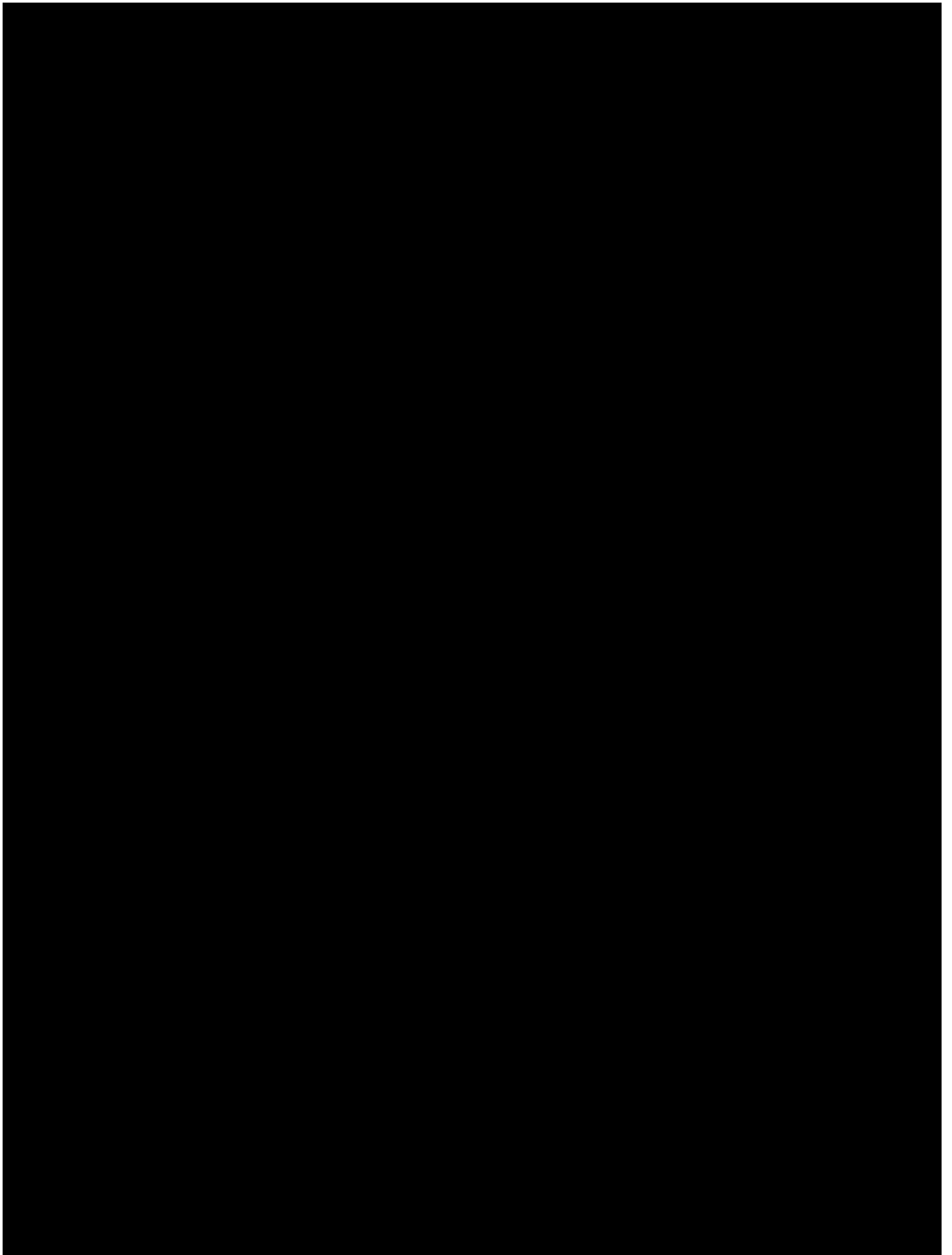








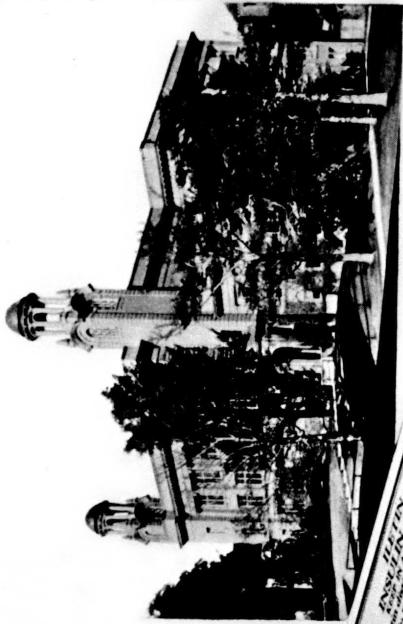




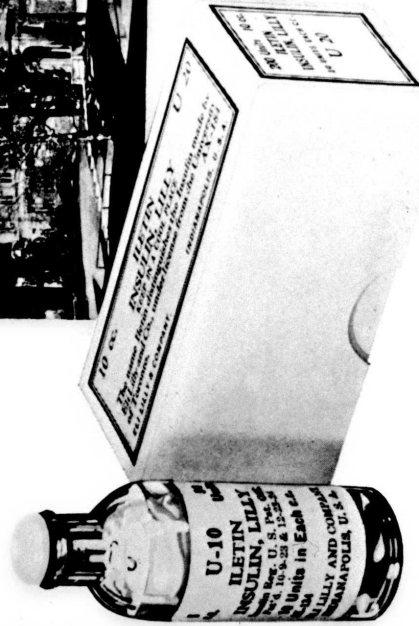






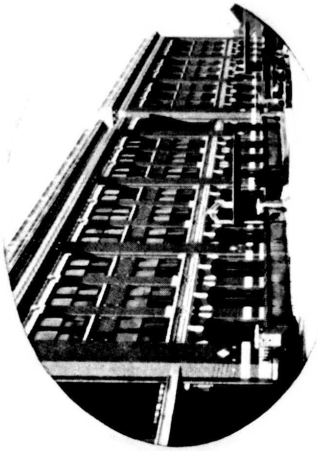


*Medical Building at the University of Toronto, where Dr. F. G. Banting studied and later engaged in research that led to the discovery of Insulin.*



I N S U L I N

*“An Epoch in the History of  
Medicine.  
A Boon to the Human Race.”*



*The Lilly Research Laboratories, source of the first commercial Insulin available in the United States.*

