

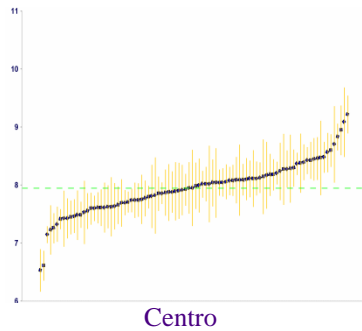
Grafici di

variabilità fra i centri

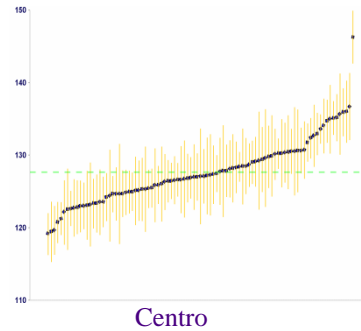
Valori medi aggiustati per età, sesso ed effetto di clustering

DM1

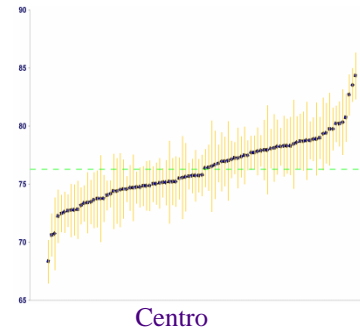
HbA1c



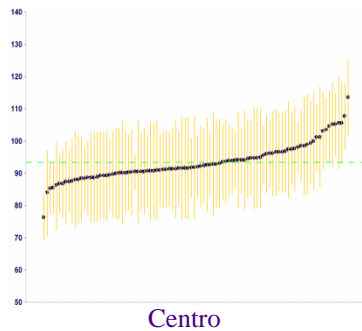
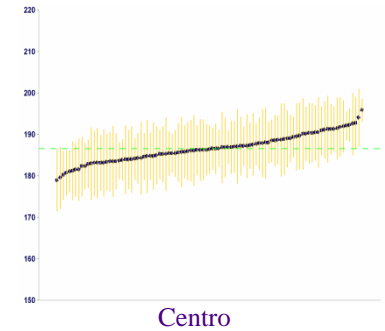
PAS



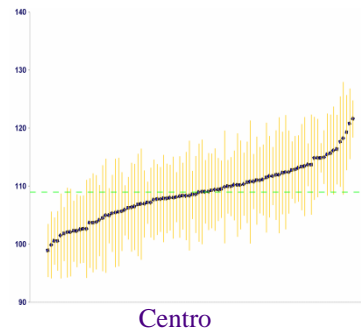
PAD



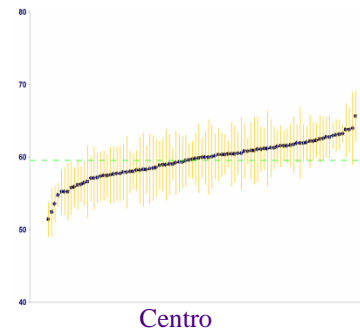
Col-tot



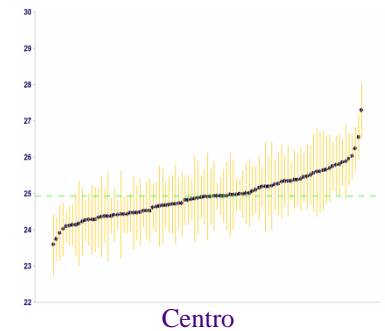
Trigliceridi



LDL-C



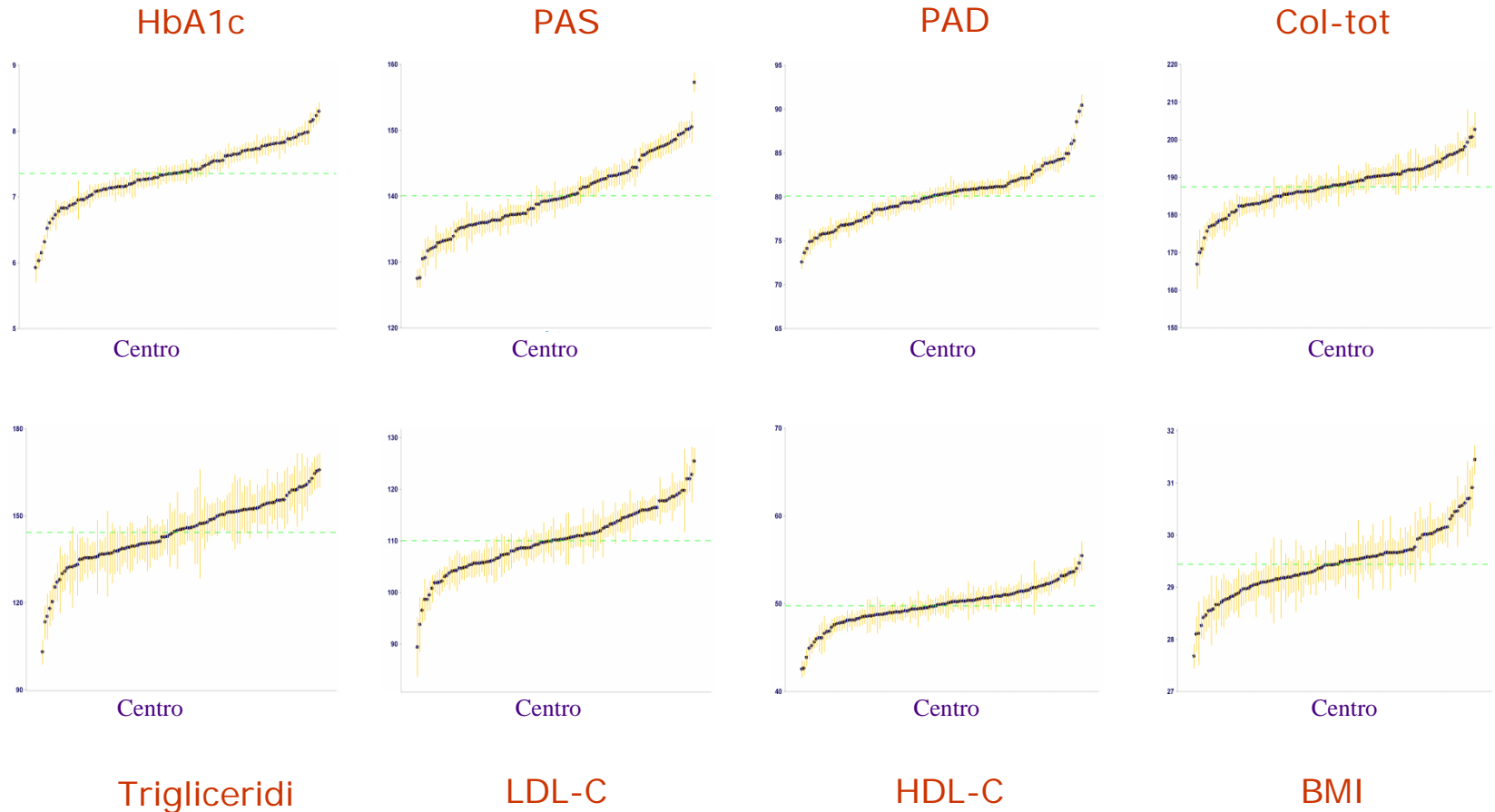
HDL-C



BMI

Valori medi aggiustati per età, sesso ed effetto di clustering

DM2

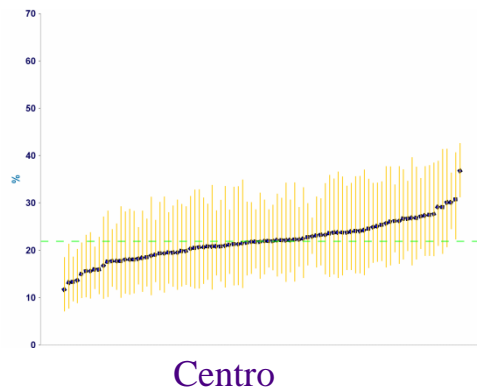


Anche dopo aver aggiustato per i potenziali fattori di confondimento, permane una sostanziale variabilità fra i centri.

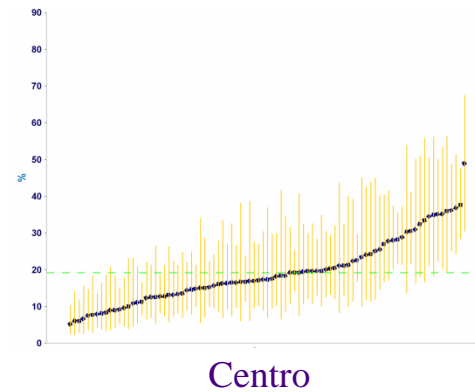
Propensione al trattamento

DM1

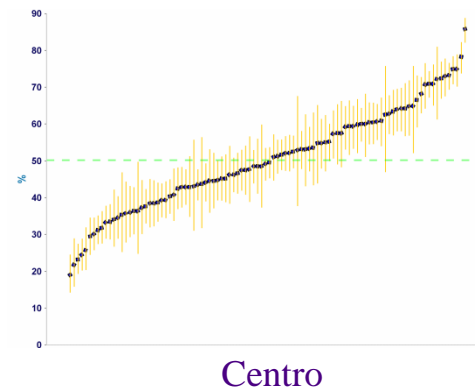
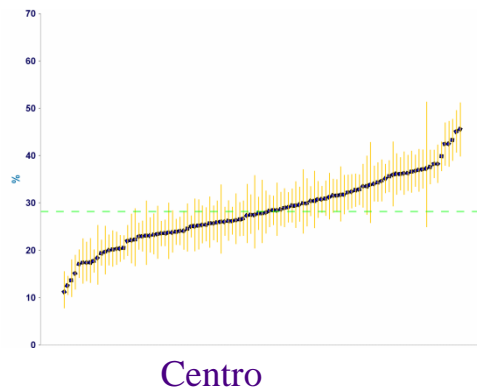
LDL \geq 130 non in trattamento



PA \geq 140/90 non in trattamento



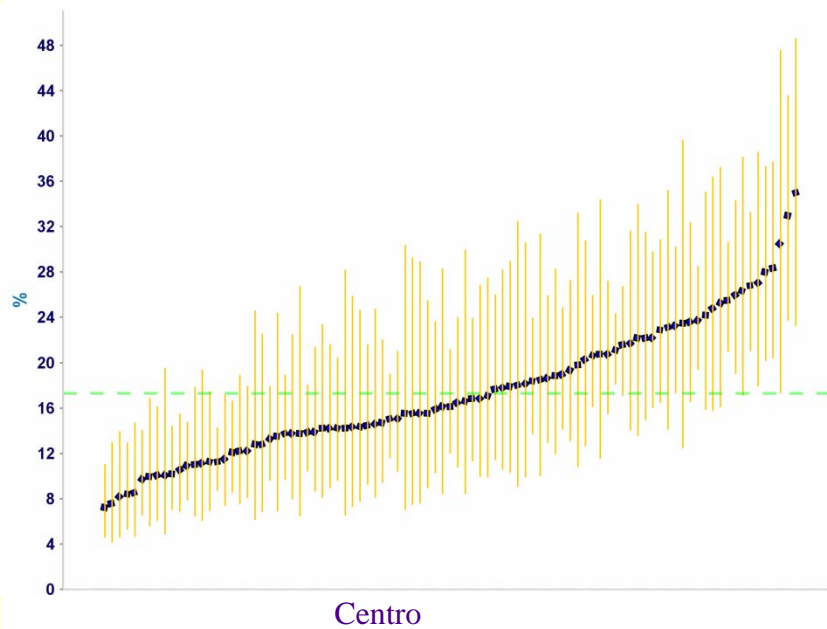
DM2



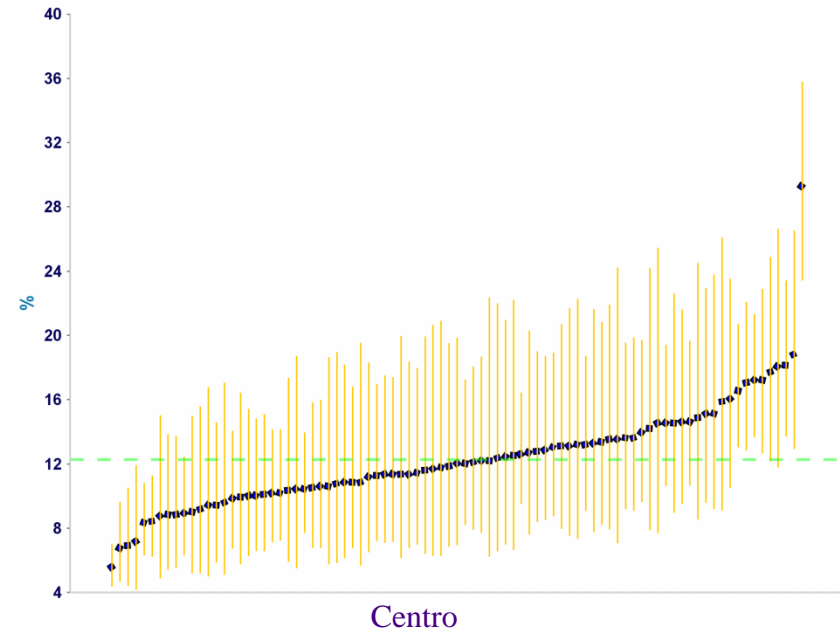
Utilizzo di specifiche categorie di farmaci

DM1

Statine



ACE-Inibitori

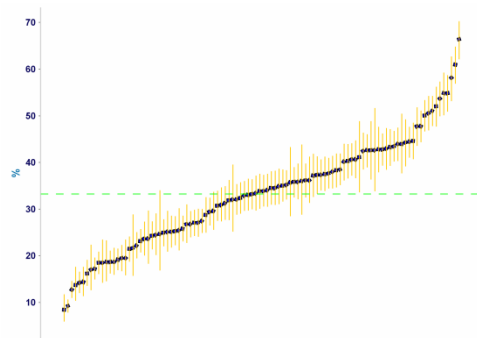


Statine	17% (7 – 35%)
ACE-Inibitori	13% (5 – 29%)

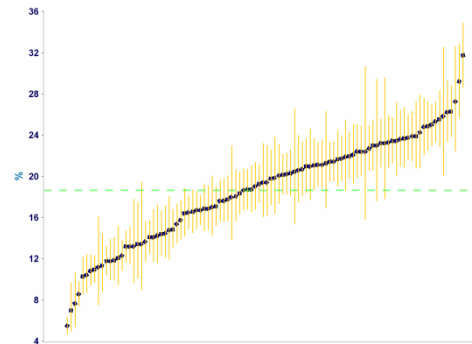
Utilizzo di specifiche categorie di farmaci

DM2

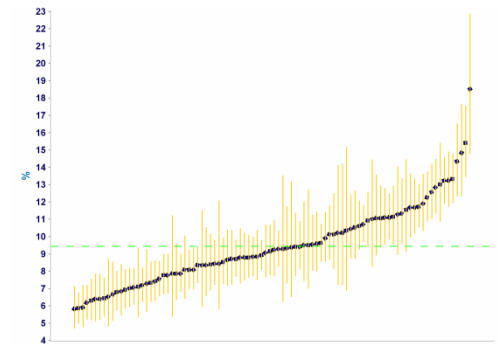
Statine



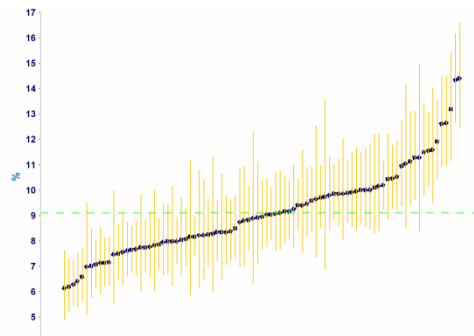
ACE-Inibitori



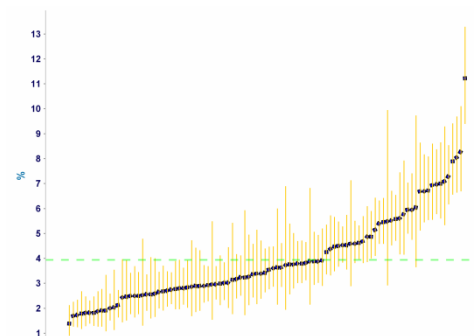
Sartani



Beta-bloccanti



Omega-3



Statine 33% (8 – 67%)
 ACE-Inibitori 18% (5 – 31%)
 Sartani 9.5% (6 – 19%)

Beta-bloccanti 8% (6 – 14%)
 Omega-3 4% (1 – 11%)