

Annali AMD 2008

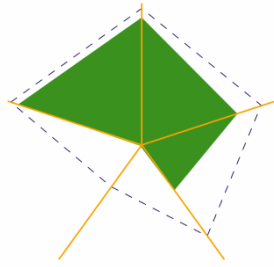
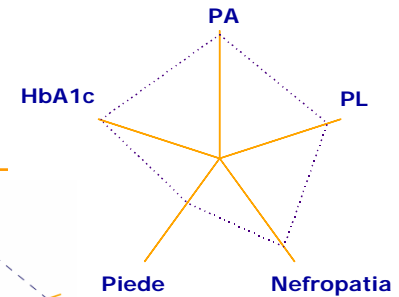
Indicatori di qualità dell'assistenza diabetologica in Italia

Analisi

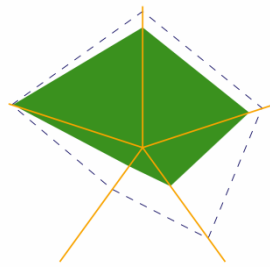
Regionali

Indicatori di processo per tipo di diabete

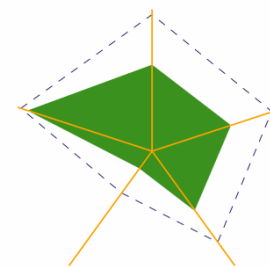
DM1



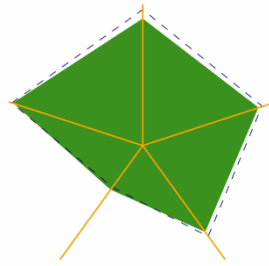
Piemonte



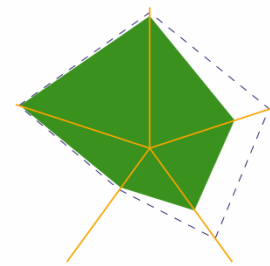
Veneto



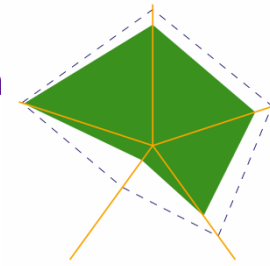
Emilia Romagna



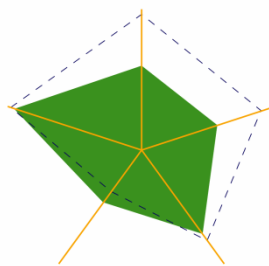
Lombardia



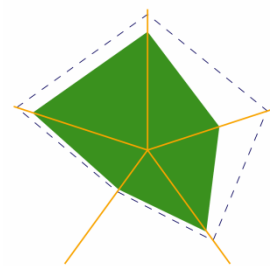
Friuli Venezia Giulia



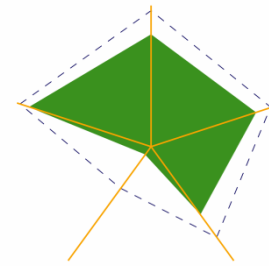
Toscana



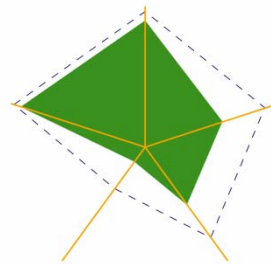
Marche



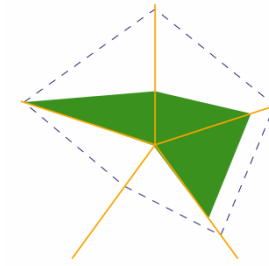
Campania



Sicilia



Lazio



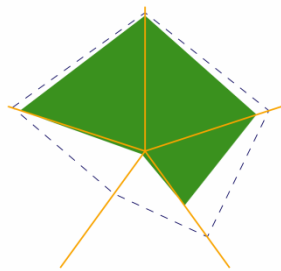
Sardegna

Variabilità fra le regioni

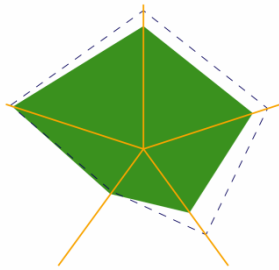
Annali AMD 2008

Indicatori di processo per tipo di diabete

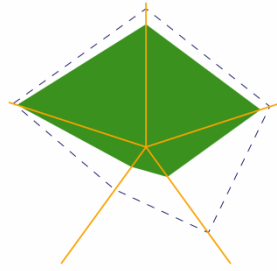
DM2



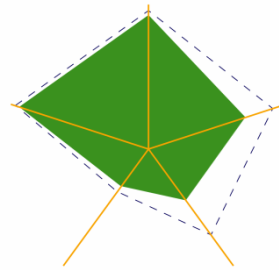
Piemonte



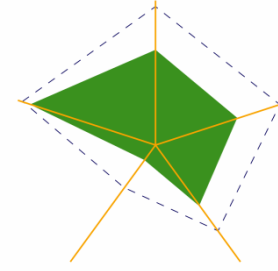
Lombardia



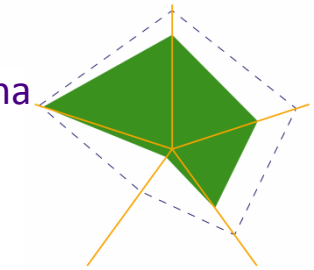
Veneto



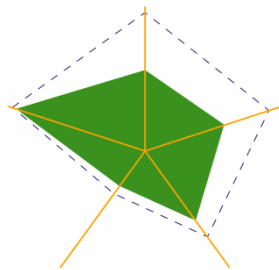
Friuli Venezia Giulia



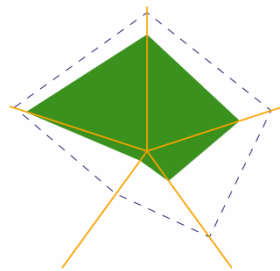
Emilia Romagna



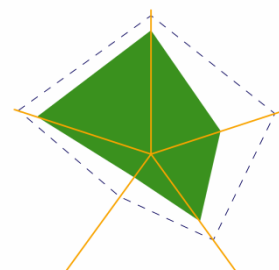
Toscana



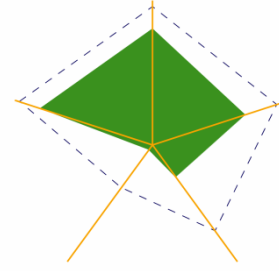
Marche



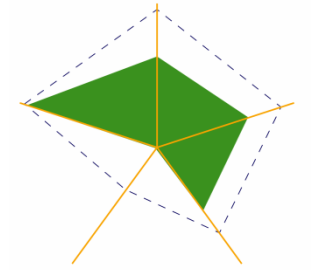
Lazio



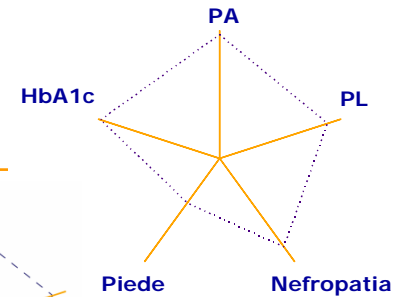
Campania



Sicilia

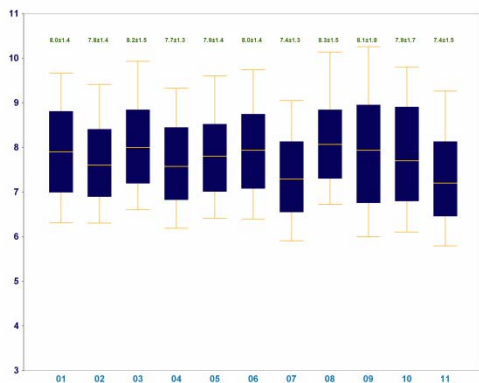


Sardegna

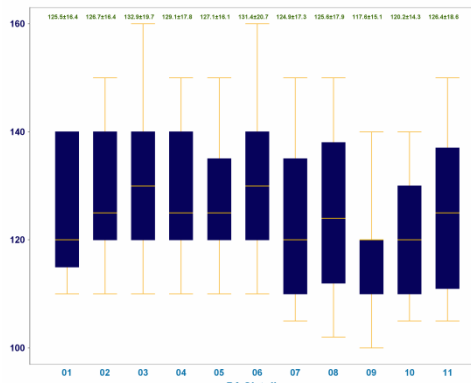


Valori medi per tipo di diabete

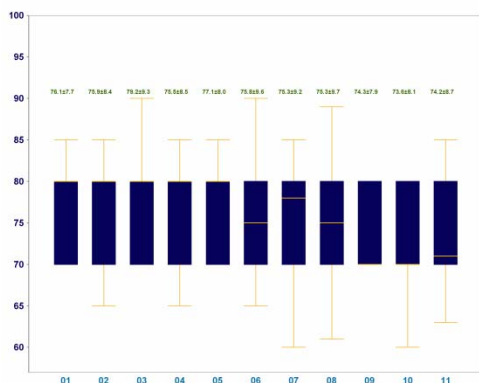
DM1



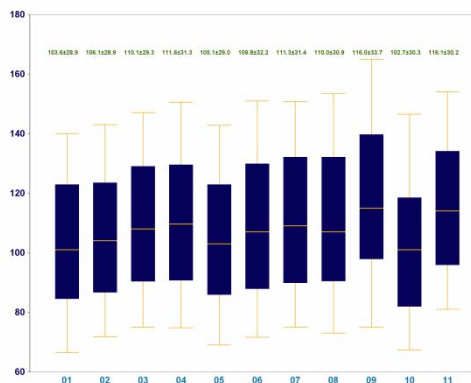
HbA1c



PAS



PAD

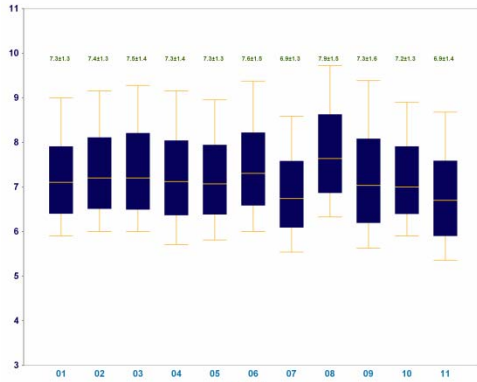


LDL-C

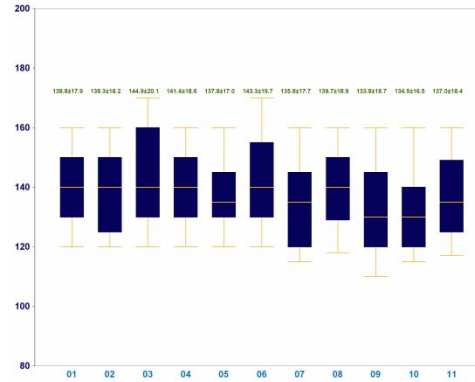
- Codice Regione - Regione
- 01 = PIEMONTE
 - 02 = LOMBARDIA
 - 03 = VENETO
 - 04 = FRIULI VENEZIA GIULIA
 - 05 = EMILIA ROMAGNA
 - 06 = TOSCANA
 - 07 = MARCHE
 - 08 = LAZIO
 - 09 = CAMPANIA
 - 10 = SICILIA
 - 11 = SARDEGNA

Valori medi per tipo di diabete

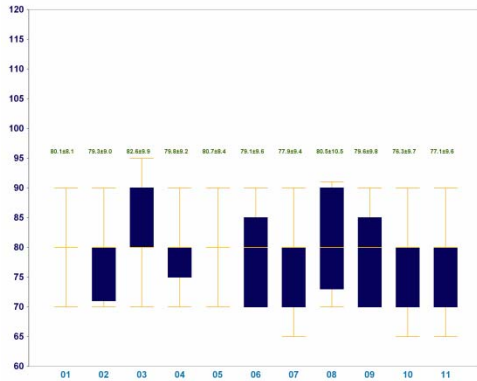
DM2



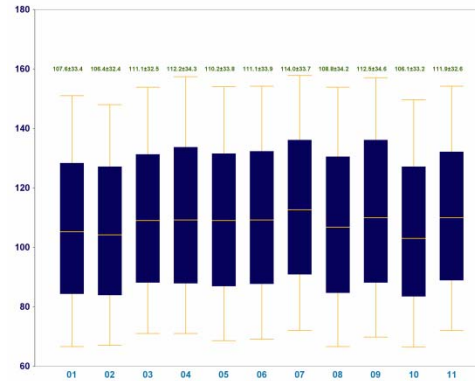
HbA1c



PAS



PAD

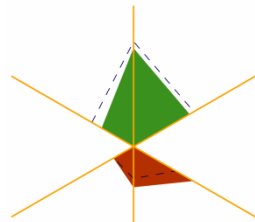


LDL-C

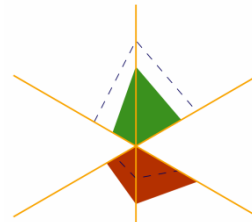


Indicatori di esito intermedio

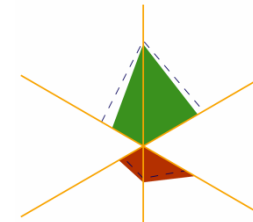
DM1



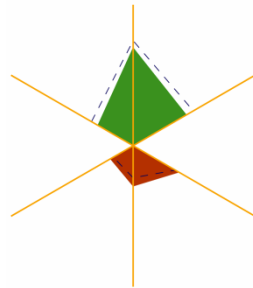
Piemonte



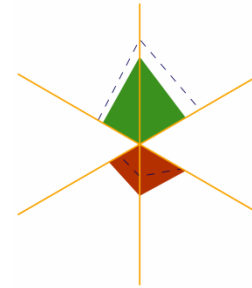
Veneto



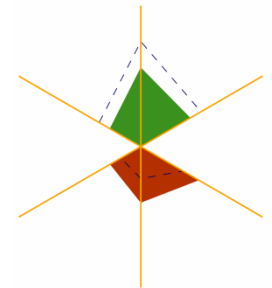
Emilia Romagna



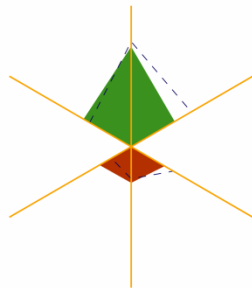
Lombardia



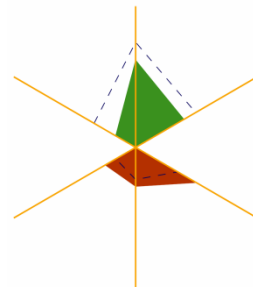
Friuli Venezia Giulia



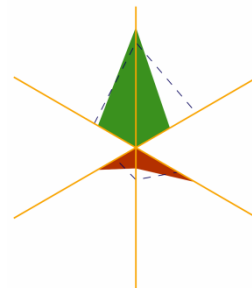
Toscana



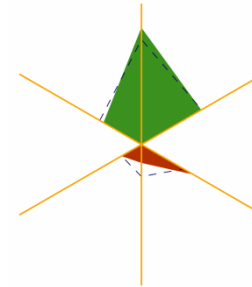
Marche



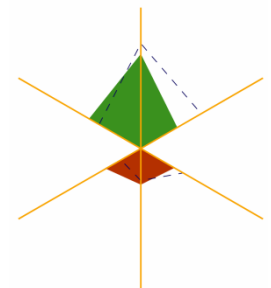
Lazio



Campania



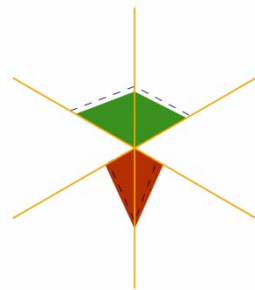
Sicilia



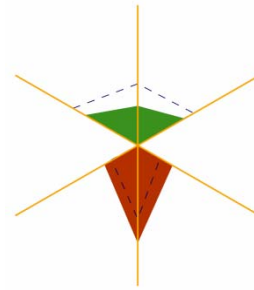
Sardegna

Indicatori di esito intermedio

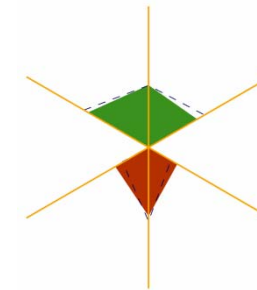
DM2



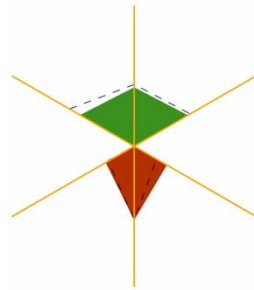
Piemonte



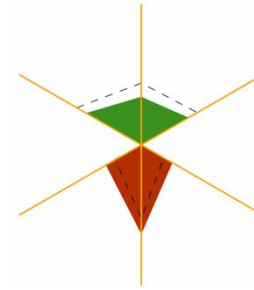
Veneto



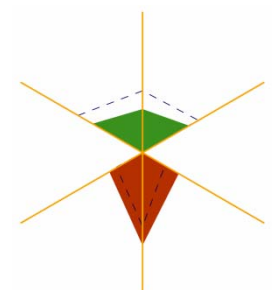
Emilia Romagna



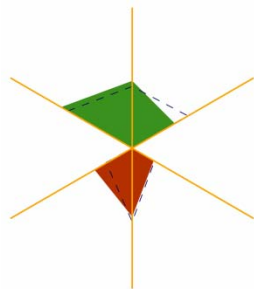
Lombardia



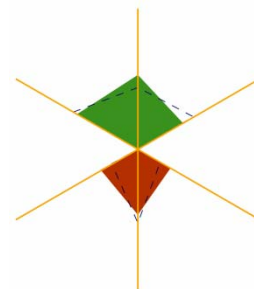
Friuli Venezia Giulia



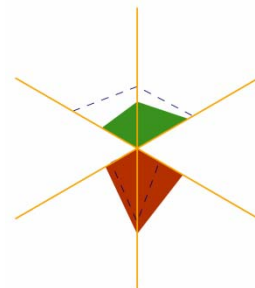
Toscana



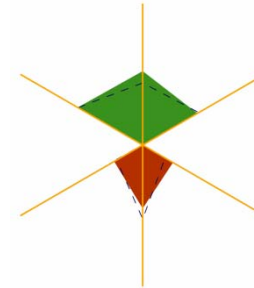
Marche



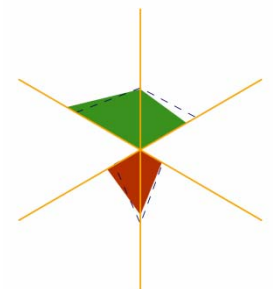
Campania



Lazio



Sicilia

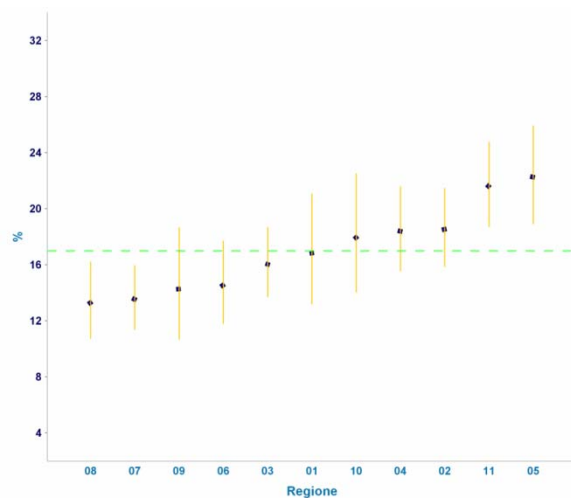


Sardegna

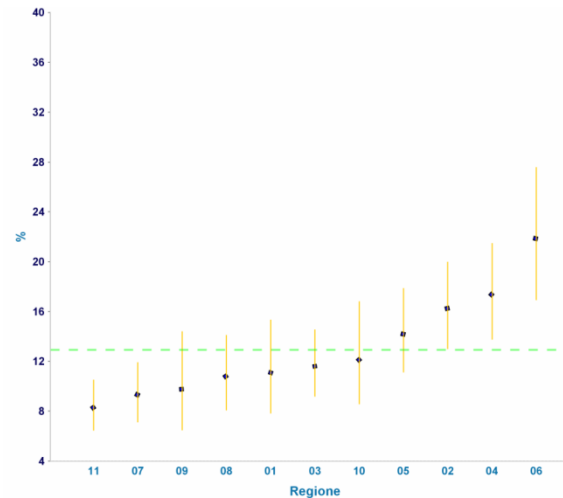
Utilizzo di specifiche categorie di farmaci: valori aggiustati per età, sesso, durata del diabete ed effetto clustering

DM1

Statine



ACE-Inibitori

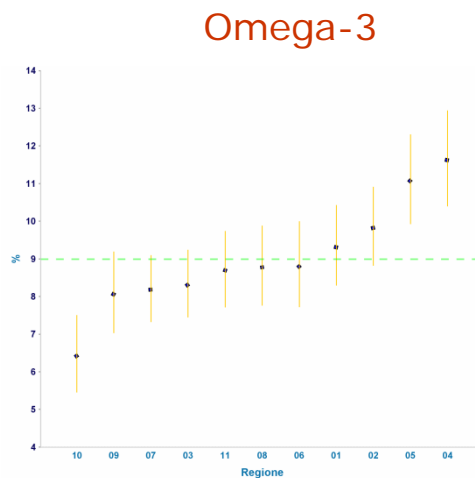
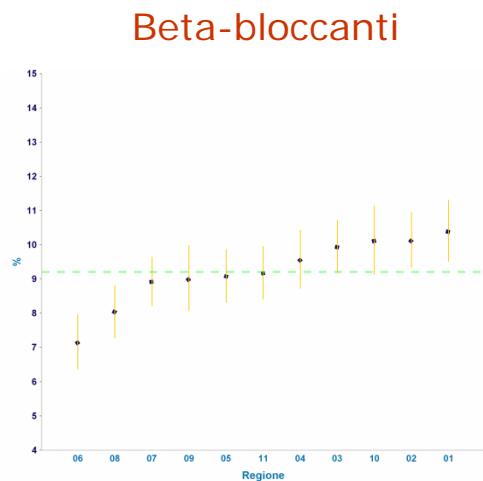
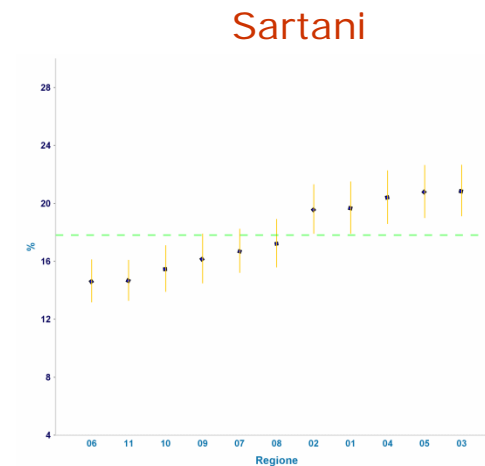
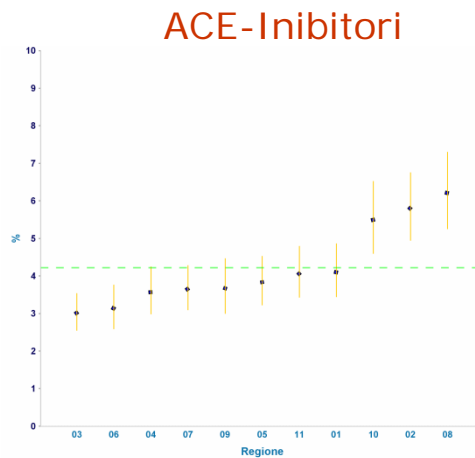
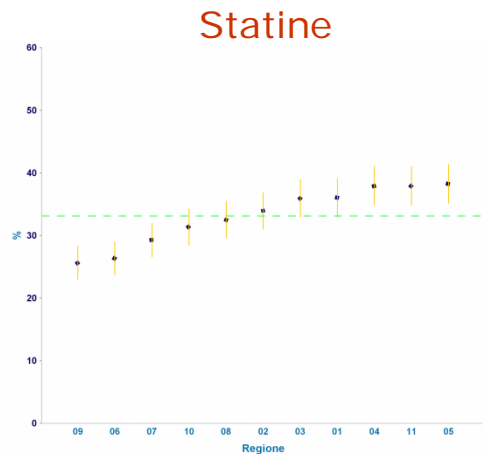


Codice Regione - Regione

- 01 = PIEMONTE
- 02 = LOMBARDIA
- 03 = VENETO
- 04 = FRIULI VENEZIA GIULIA
- 05 = EMILIA ROMAGNA
- 06 = TOSCANA
- 07 = MARCHE
- 08 = LAZIO
- 09 = CAMPANIA
- 10 = SICILIA
- 11 = SARDEGNA

Utilizzo di specifiche categorie di farmaci: valori aggiustati per età, sesso, durata del diabete ed effetto clustering

DM2



- Codice Regione - Regione**
- 01 = PIEMONTE
 - 02 = LOMBARDIA
 - 03 = VENETO
 - 04 = FRIULI VENEZIA GIULIA
 - 05 = EMILIA ROMAGNA
 - 06 = TOSCANA
 - 07 = MARCHE
 - 08 = LAZIO
 - 09 = CAMPANIA
 - 10 = SICILIA
 - 11 = SARDEGNA